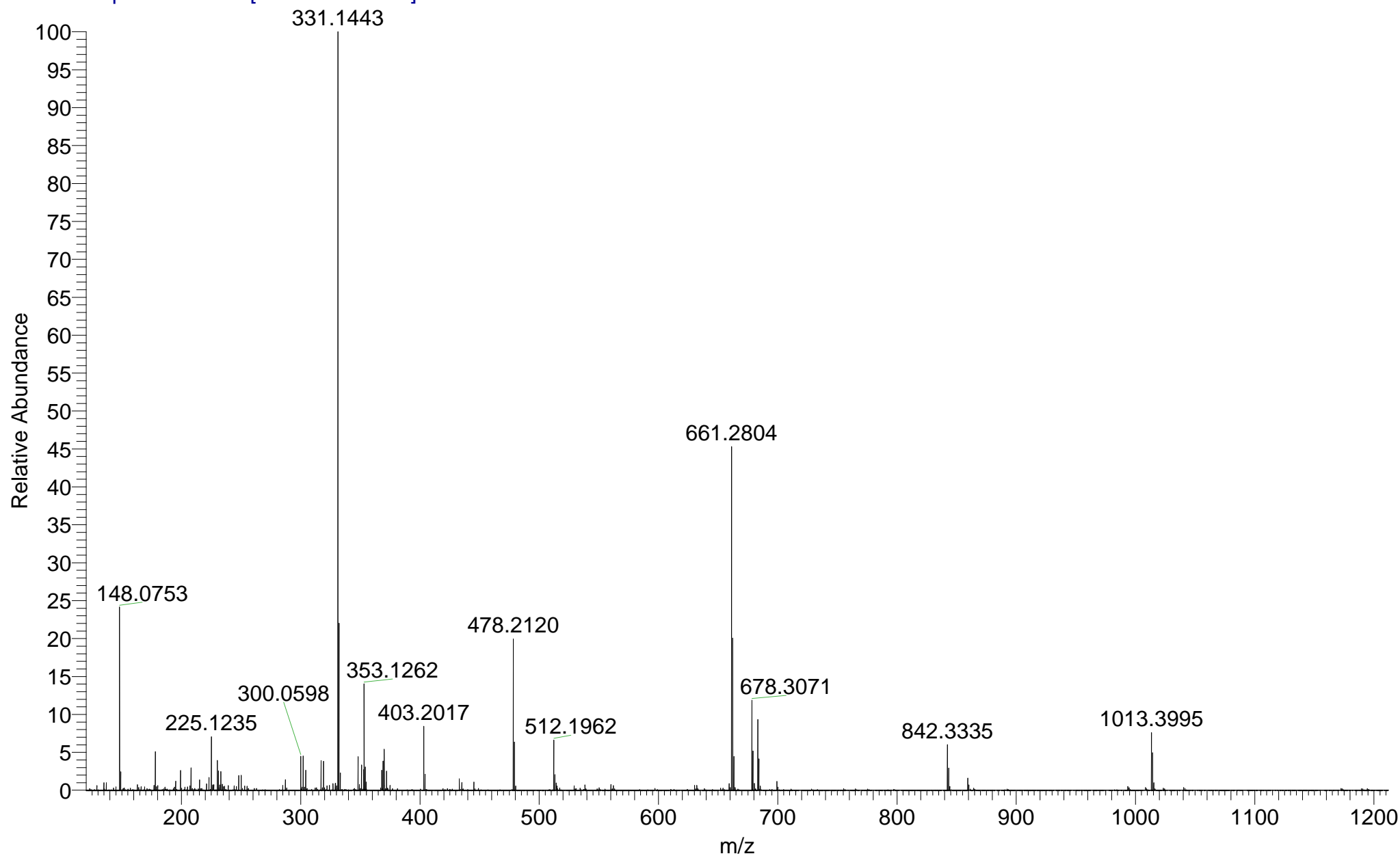
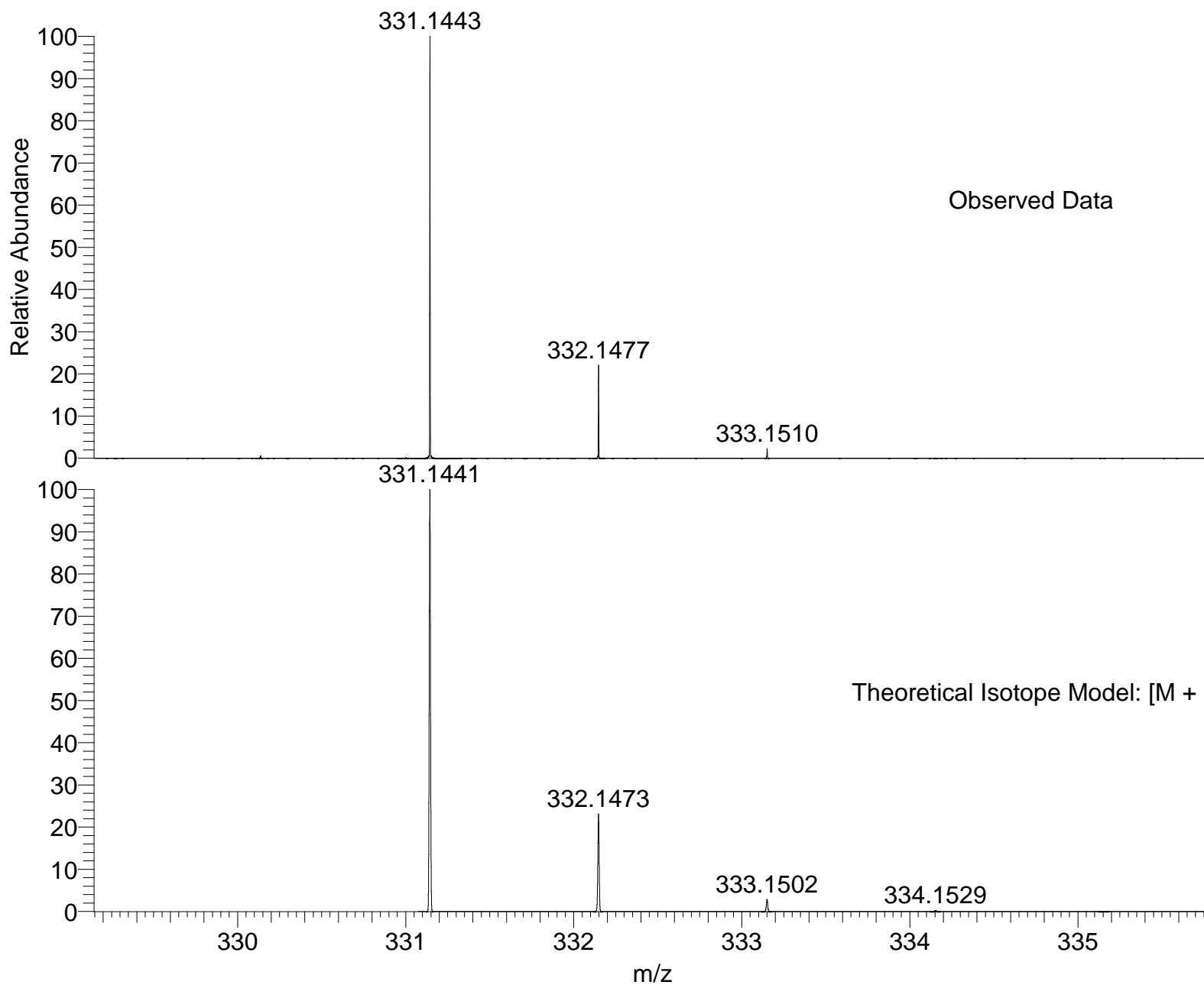


BATJAM_LTYJJ_33050 #46-59 RT: 0.74-1.04 AV: 12 SM: 7G NL: 1.03E7

T: FTMS + p NSI Full ms [120.00-1935.00]





NL:
1.03E7
BATJAM_LTYJJ_33050#46-
59 RT: 0.74-1.04 AV: 12 T:
FTMS + p NSI Full ms
[120.00-1935.00]

NL:
1.85E4
C₂₁H₁₈N₂O₂H:
C₂₁H₁₉N₂O₂
p (gss, s /p:40) Chrg 1
R: 40000 Res .Pwr . @FWHM

Isotope: Min. .. Max.
 14 N 0....15
 16 O 0....15
 12 C 0....30
 1 H 0....50
 23 Na 0....0
 Tolerance Window: +- 5.00 ppm
 Db/Ring Equiv: -3.. 300
 Fits: 300

N-Rule: Do not use
 Charge: 1

Mass	Theoretical Mass	Delta [ppm]	RDB	Composition
331.1443	331.1441	0.6	13.5	C ₂₁ H ₁₉ O ₂ N ₂
	331.1446	-0.9	6.5	C ₆ H ₁₅ O ₃ N ₁₄
	331.1446	-0.9	1.0	C ₇ H ₂₁ O ₈ N ₇
	331.1433	3.1	1.5	C ₅ H ₁₉ O ₇ N ₁₀
	331.1428	4.6	14.0	C ₁₉ H ₁₇ O ₁ N ₅
	331.1459	-5.0	6.0	C ₈ H ₁₇ O ₄ N ₁₁
	331.1460	-5.0	0.5	C ₉ H ₂₃ O ₉ N ₄